

Expanding minimally invasive options for surgeons and their patients

Monteris Mini-Bolt and Mini-Bolt VUE™ cranial fixation are designed to provide a stable platform to deliver neurosurgical devices or instruments.

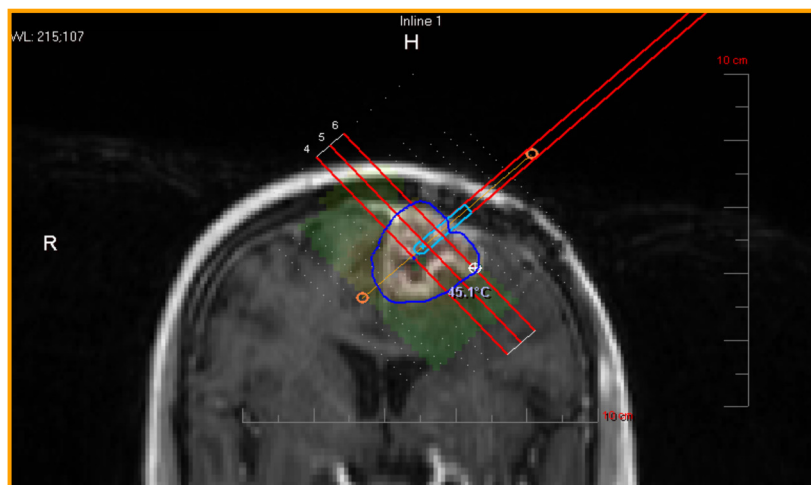
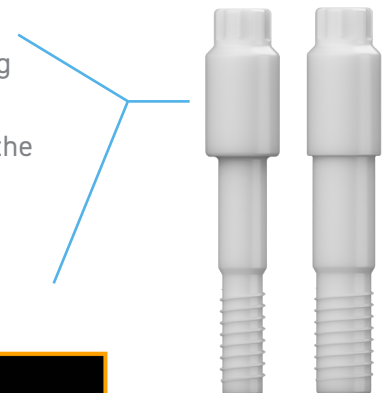


Mini-Bolt: consistent and reliable performance for every case

- > Enables precise laser probe placement on-trajectory
- > Compatible with most stereotactic frames and navigation systems for an efficient workflow
- > Minimally invasive requiring only a small 4.5 mm diameter hole to accommodate 2.2 mm and 3.3 mm instruments
- > 1.5T and 3.0T MR Conditional medical-grade titanium

Mini-Bolt VUE: an option for lesion targets near the skull

- > Eliminates MR-induced B1 artifacts, enhancing visualization during NeuroBlate® procedures
- > Allows for precise monitoring of heat progression in proximity to the bolt throughout the procedure
- > MR Safe high-mechanical strength ceramic



Intraoperative image showing clear, consistent thermometry in a shallow lesion using Mini-Bolt VUE.

MONTERIS MINI-BOLT + ACCESSORIES

Contact a Monteris Medical representative to order individual kit components.

Monteris Mini-Bolt

CMB022-S	Mini-Bolt for 2.2 mm Device - Sterile
CMB033-S	Mini-Bolt for 3.3 mm Device - Sterile
CMB022	Mini-Bolt for 2.2 mm Device - Non-Sterile
CMB033	Mini-Bolt for 3.3 mm Device - Non-Sterile
CMB022-V	Mini-Bolt VUE for 2.2 mm Device
CMB033-V	Mini-Bolt VUE for 3.3 mm Device

Monteris Mini-Bolt Accessory Kits

Alignment Mandrel, Insert Adapter for Alignment Mandrel, 4.5 mm Clearance Mandrel, 4.5 mm Depth Stop, 4.5 mm Insert Adapter, T-Handle with Mini-Bolt Stereotactic Driver, Mini-Bolt Removal Tool for MRI, Sterilization Tray with Dividers

CMB022-AA	2.2 Mini-Bolt Accessory Kit for 2.2 mm Mini-Bolt
CMB033-AA	3.3 Mini-Bolt Accessory Kit for 3.3 mm Mini-Bolt
CMB022-UP	Upgrade to 2.2 mm Mini-Bolt Accessories (2.2 mm Alignment Mandrel, Insert Adapter and Stereotactic Driver only)
CMB033-UP	Upgrade to 3.3 mm Mini-Bolt Accessories (3.3 mm Alignment Mandrel, Insert Adapter and Stereotactic Driver only)
CMBVUE-UP	Mini-Bolt Accessory Kit for Mini-Bolt VUE

Additional Stereotactic Device Adapters and Accessories

CMB-CW	Accessory Host Adapter for CRW Stereotactic Frame
CMB-LK	Accessory Host Adapter for Leksell® Stereotactic Frame
CMB-RR	Accessory Host Adapter for Rosa® Robot
CMB-MA	Accessory Host Adapter for Stealth Autoguide™ System
CMB022-SD	6 mm Specialized Driver for 2.2 Mini-Bolt with Insert Adapter
CMB-SD	6 mm Specialized Driver for 3.3 Mini-Bolt with Insert Adapter
CMB-34	Insert Adapter for 3.4 mm ID
CMB-TA	Trumpet Insert Adapter 4.5 mm ID
CMB-TR	Mini-Bolt Sterilization Tray with Dividers

Disclosures

MiniBolt Cranial Fixation Bolt, also known as AXiiiS CMB. The Mini-Bolt is a disposable device intended to provide placement and skull fixation of neurosurgical instruments or devices with an outer diameter (OD) up to 3.3 mm or 2.2 mm.

All brain surgeries carry risk. Possible adverse events include, but are not limited to, tissue injury, infection, and cerebral spinal fluid (CSF) leak. Prior to using these devices, please review the Instructions for Use for a complete listing of indications, contraindications, warnings, precautions and potential adverse events. For full prescribing information, please visit monteris.com

Rx Only



U.S. Office

131 Cheshire Lane, Suite 100
Minnetonka, MN 55305, USA
+1.866.799.7655

Canadian Office

Unit 1B-25 Scurfield Blvd.
Winnipeg, MB R3Y1G4, Canada
+1.204.272.2220

